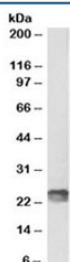


SOCS1 Antibody [Biotin Conjugate] (R36335BTN)

Catalog No.	Formulation	Size
R36335BTN	0.5 mg/ml in 1X TBS, pH7.3, with 0.5% BSA (US sourced) and 0.02% sodium azide	100 ug

[Bulk quote request](#)

Availability	1-3 business days
Species Reactivity	Human, Mouse
Predicted Reactivity	Rat, Dog, Cow
Format	Biotin Conjugate
Clonality	Polyclonal (goat origin)
Isotype	Goat Ig
Purity	Antigen affinity
Gene ID	8651
Applications	Western Blot : 1-3ug/ml ELISA (peptide) LOD : 1:32000
Limitations	This SOCS1 antibody is available for research use only.



Western blot testing of mouse spleen lysate with biotinylated SOCS1 antibody at 1ug/ml. Predicted molecular weight ~24kDa, but also may be visualized at ~37kDa. An NAP blocker was used in place of non-fat milk as blocking solution and diluent. (1)

Description

Additional name(s) for this target protein: Suppressor of cytokine signaling 1; SSI1; TIP3

Application Notes

Optimal dilution of the SOCS1 antibody should be determined by the researcher.

1. Do not use a blocking agent or diluent that contains biotin (including milk and some BSA preparations) when testing

with biotinylated antibodies. A non-animal protein (NAP) blocker is recommended.

Immunogen

Amino acids VLRDYLSSFPFQI were used as the immunogen for this SOCS1 antibody.

Storage

Aliquot and store the SOCS1 antibody at -20oC.